

# Overview and Scrutiny Committee Transport and Air Quality Portfolio Holder Cllr Liam Robinson



# General Overview

The Transport Act 1968 established Passenger Transport Authorities (Member led) and Passenger Transport Executives (Officer led)

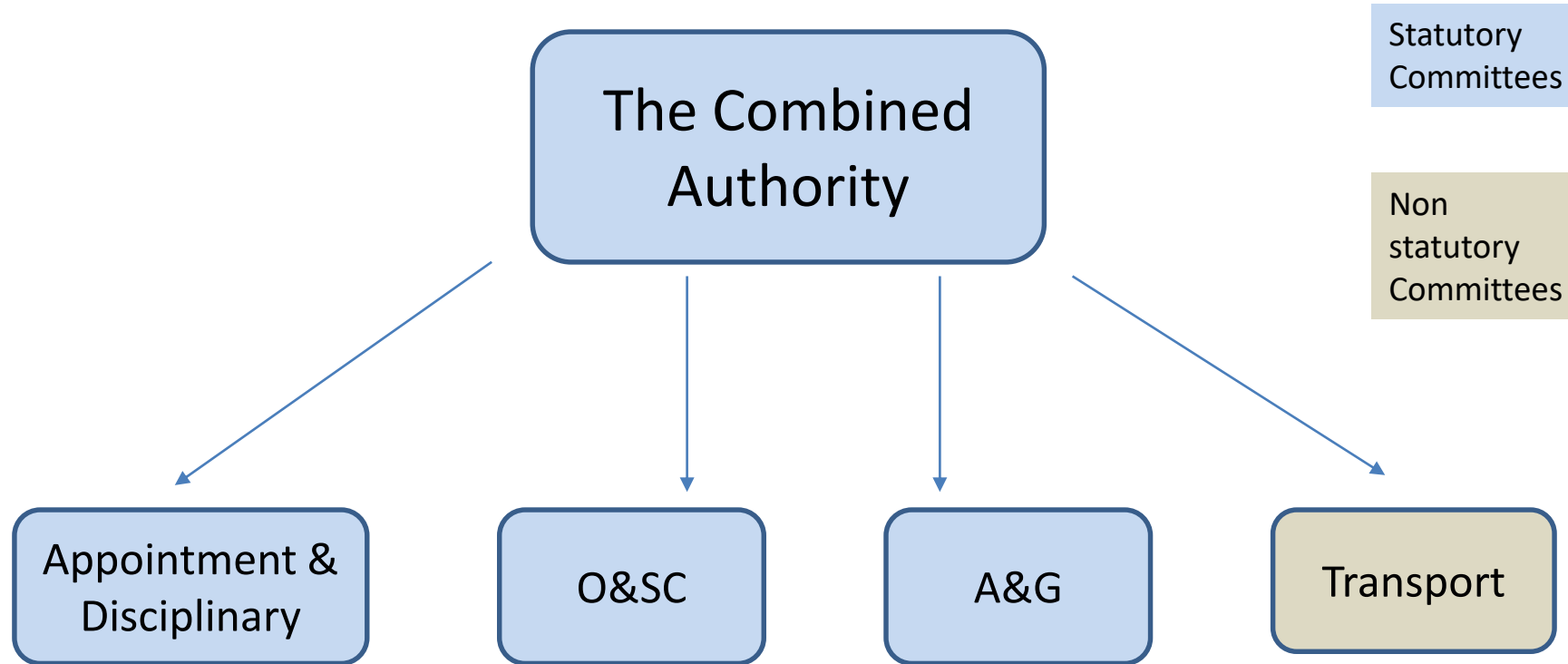
PTAs became Integrated Transport Authorities and then were subsumed by Combined Authorities

- The Authority (PTA,ITA,CA) directs the Executive (Merseytravel) to execute its policies.
- Legislation provides the Executive with its own legal powers specifically in relation to Bus & Rail Agreements (subject to CA approval)
- The Executive accounts to the Authority in relation to the exercise of its functions.
- Merseytravel is providing a number of support services to the Combined Authority as well as directly to Merseytravel. (Legal/Procurement/Finance/Democratic Services/Audit.)

# The Combined Authority

- Sets the policy for Merseytravel to execute
- Merseytravel retains its own legal responsibilities
- Legal duties in respect of Transport, Ferries, Bus Powers, Rail Concession, HUBS, Ticketing Schemes, paid for and concessionary tickets.
- Approve certain Merseytravel actions e.g. some land transactions
- Ownership of the Mersey Tunnels
- Appoints Merseytravel Directors (including Non-Executive Directors)
- Forward Plan And Key Decisions
- Responsible for setting the levy/Merseytravel grant
- Responsible for setting Mersey Tunnel tolls
- Has its own statutory officers
- Has statutory committees- audit and scrutiny
- Has non statutory committees- the Transport Committee and appts Committee

# Committees





# Responsibilities of the Transport Committee

## Membership

- Each District appoints 4 members.

## Terms of Reference

- Some matters delegated
- Some referred ( see Constitution)

Provides transport advice to the Combined Authority and monitors transport activity on behalf of the Combined Authority

- Reports through modern.gov
- Though a Non-Statutory Committee, there are statutory deadlines to adhere to e.g. agenda being published

# Relationship of Transport Committee and Merseytravel and wider transport network

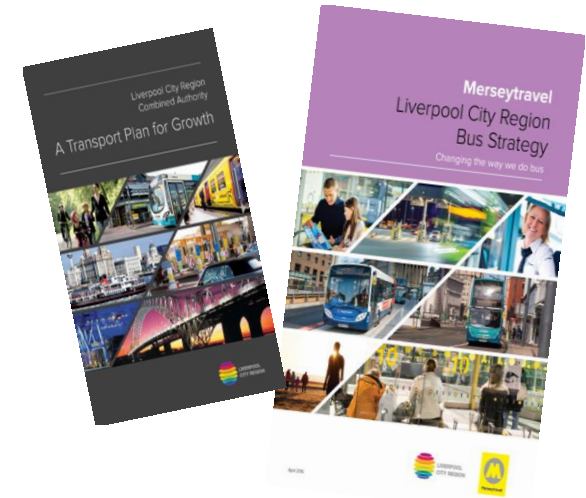
- Receives Merseytravel officer reports and recommends actions to the CA...e.g. tunnel tolls, Merseytravel budget
- Reviews financial and performance reports from Merseytravel
- Receives progress reports on projects
- Receives reports from operators and holds them to account in public setting

# What does Transport Policy do?

- Help develop Transport Policy for the Combined Authority –
  - CA Transport Plan, thematic strategies, Transport for the North
- Support LAs with local strategies (e.g. air quality or investment plans)
- Help formulate policy positions and responses for TC and CA:-
  - e.g. to Central Government, adjoining LAs and to partners

# Transport in Practice: Current Key work

- **Buses**
- Adopted Bus Strategy with vision for Growth
- Oversee Current “Bus Alliance”
  - Young persons fare deal and My Ticket
  - £50m plus in new vehicles
  - Passenger growth 16.5% (Young people 168% growth)
- Overseeing work to utilise devolved powers via Buses Act 2017
  - Options being assessed and developed
    - Franchising- “London-style” Re-Regulation
    - Enhanced Partnership
    - Do Minimum Reference Case (i.e. retaining the Alliance)
  - Will bring forward recommendation to the CA in early 2020.





# Transport in Practice: Current Key work

- Rail
- Refreshed long term Rail Strategy
- Overseeing introduction of new Publicly owned fleet of trains with pioneering accessibility for Merseyrail
- Through TfN pushing for improvement in Northern Rail
- New Services
  - Halton Curve- New services introduced in May
  - Glasgow- Delayed to Autumn 19
  - Edinburgh- December 19
  - Additional London services
  - Newton-le-Willows completed
  - Maghull North Open



# Transport in Practice: Current Key Work

- TfN and Northern Powerhouse Rail
- Closely working with TfN on options, including new line Liverpool-Manchester
- SOBC to be submitted to Government December
- A full, direct North-South HS2 and East-West Northern Powerhouse Rail Connection would deliver major economic benefits to LCR



£15  
BILLION  
BOOST TO THE CITY  
REGIONAL ECONOMY

20,000  
NEW  
JOBS

10,000  
NEW  
HOMES

2.9 MILLION  
VISITORS  
FOR LEISURE AND  
BUSINESS

# Transport in Practice: Current Key Work

- Tunnels and Ferries
- Overseeing procurement of new vessels
- Update on Royal Daffodil, terminals e.g. Eureka at Seacombe
- Advised on £1 Fast Tag for local users.

# Questions?

